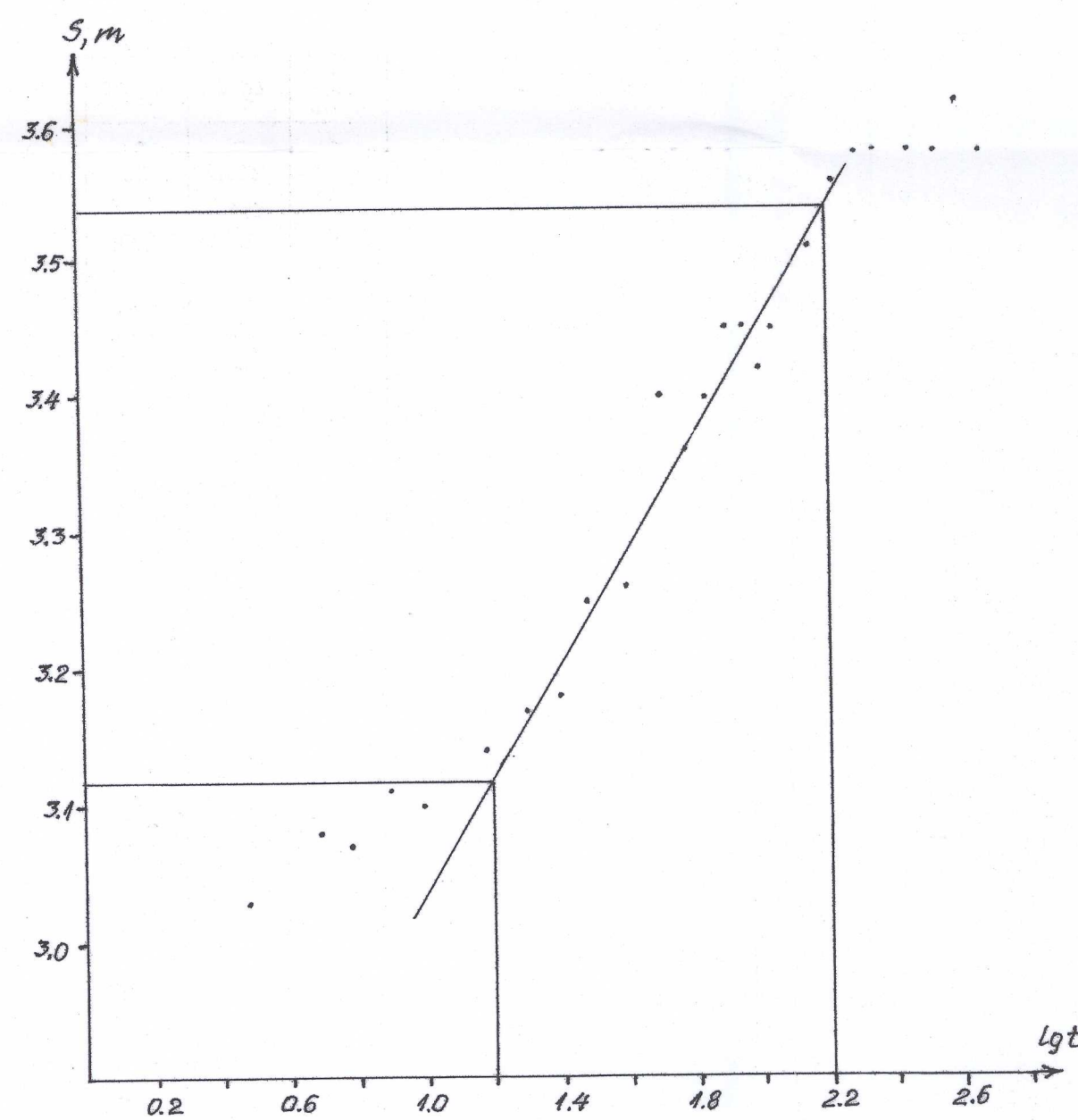


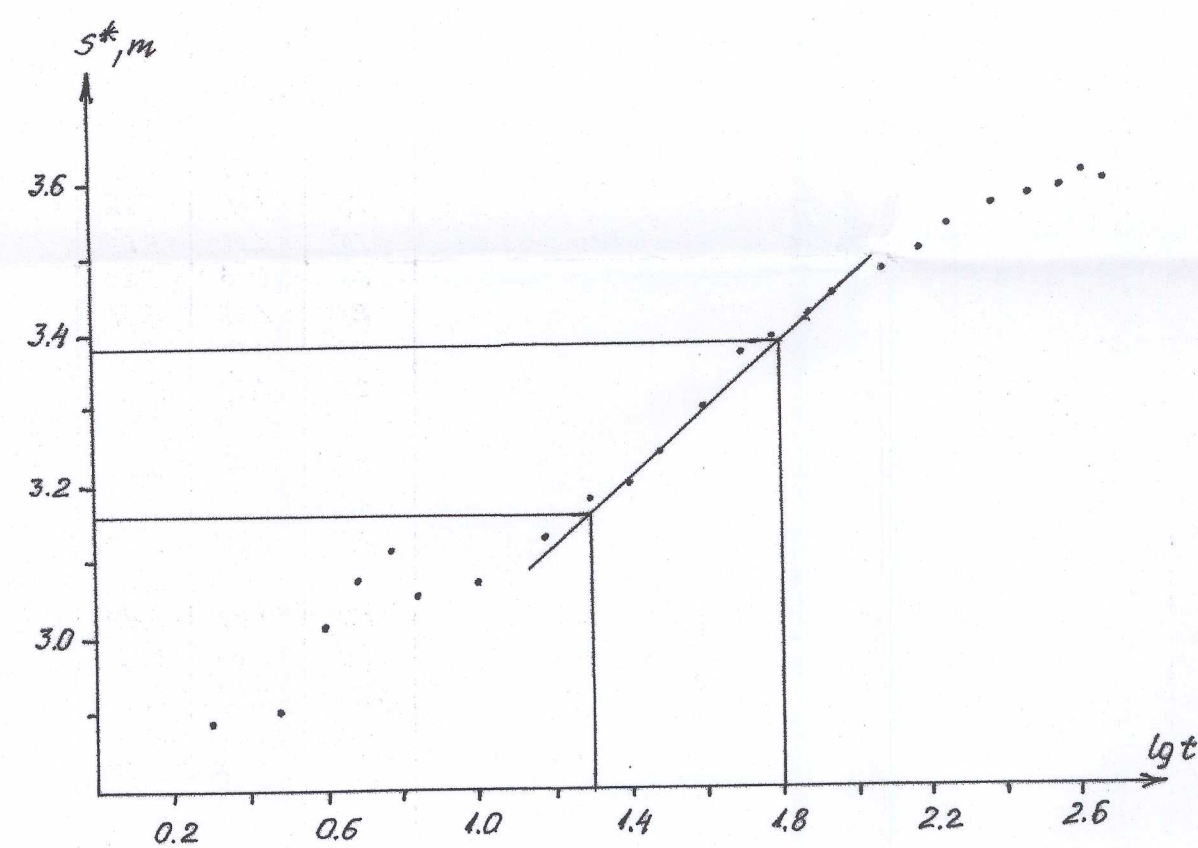
Veejuhtivuse (T) arvutus grafoanalüütilisel meetodil

Puurauk U-8-1

t, min	lg t	S, m
1	-	-
2	0.30	2.90
3	0.48	3.03
5	0.69	3.08
6	0.78	3.07
8	0.90	3.11
10	1	3.10
15	1.18	3.11
20	1.30	3.17
25	1.40	3.18
30	1.48	3.25
40	1.60	3.26
50	1.70	3.40
60	1.78	3.36
70	1.84	3.40
80	1.90	3.45
90	1.95	3.45
100	2.0	3.42
110	2.04	3.45
140	2.15	3.51
170	2.23	3.56
200	2.30	3.58
250	2.36	3.58
290	2.46	3.58
350	2.54	3.58
410	2.61	3.62
470	2.67	3.58
530	2.72	3.61



t, min	lg t	S*, m
1	-	2.85
2	0.30	2.89
3	0.48	2.90
4	0.60	3.02
5	0.69	3.07
6	0.78	3.11
7	0.84	3.05
10	1	3.07
15	1.18	3.13
20	1.30	3.18
25	1.40	3.20
30	1.48	3.24
40	1.60	3.30
50	1.70	3.37
60	1.78	3.39
75	1.88	3.42
90	1.95	3.45
120	2.08	3.48
150	2.18	3.51
180	2.26	3.54
240	2.38	3.57
300	2.48	3.58
360	2.56	3.59
420	2.62	3.61
480	2.68	3.60



$$c = \frac{S_2 - S_1}{\lg t_2 - \lg t_1} = 0.42$$

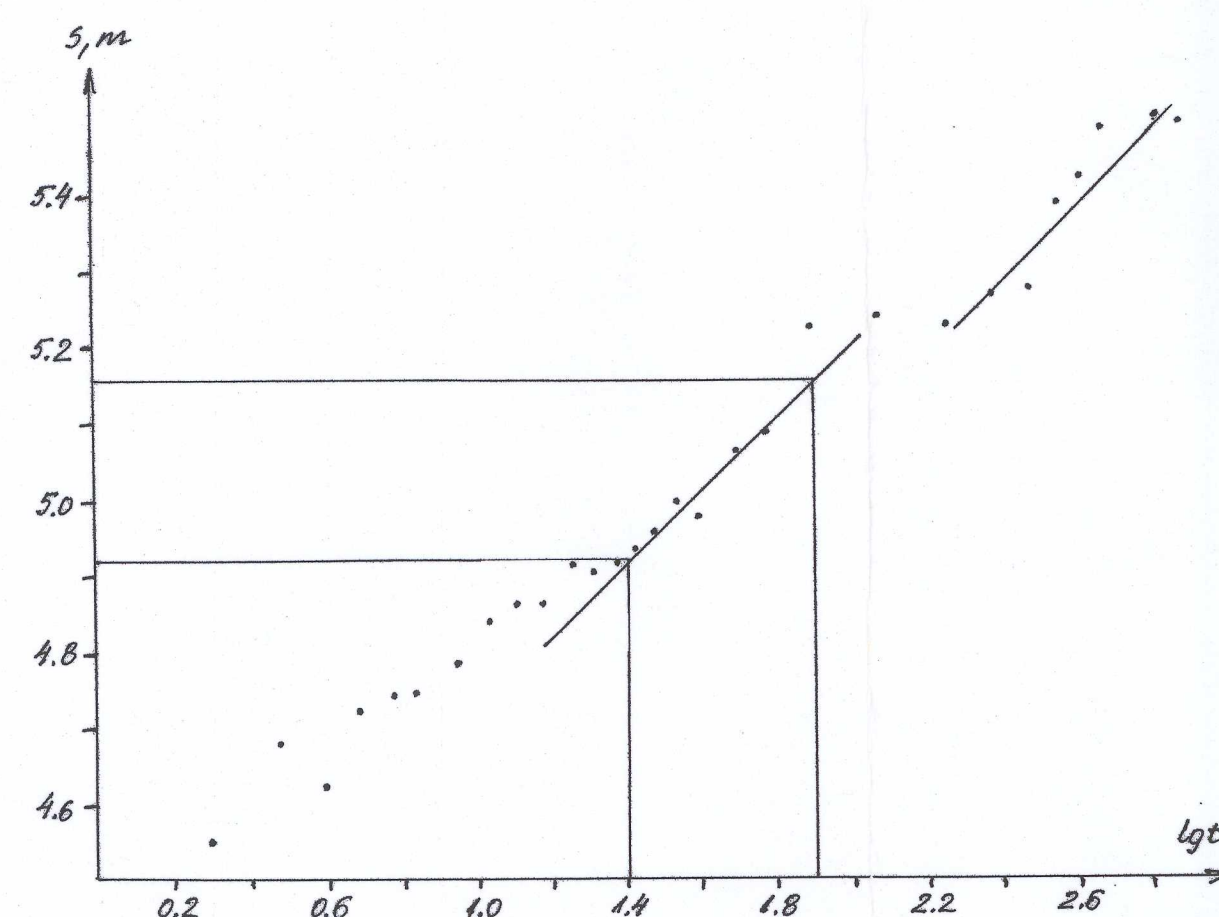
$$T = \frac{0.183 \cdot Q}{c} = 285$$

$$c = \frac{S_2^* - S_1^*}{\lg t_2 - \lg t_1} = 0.44$$

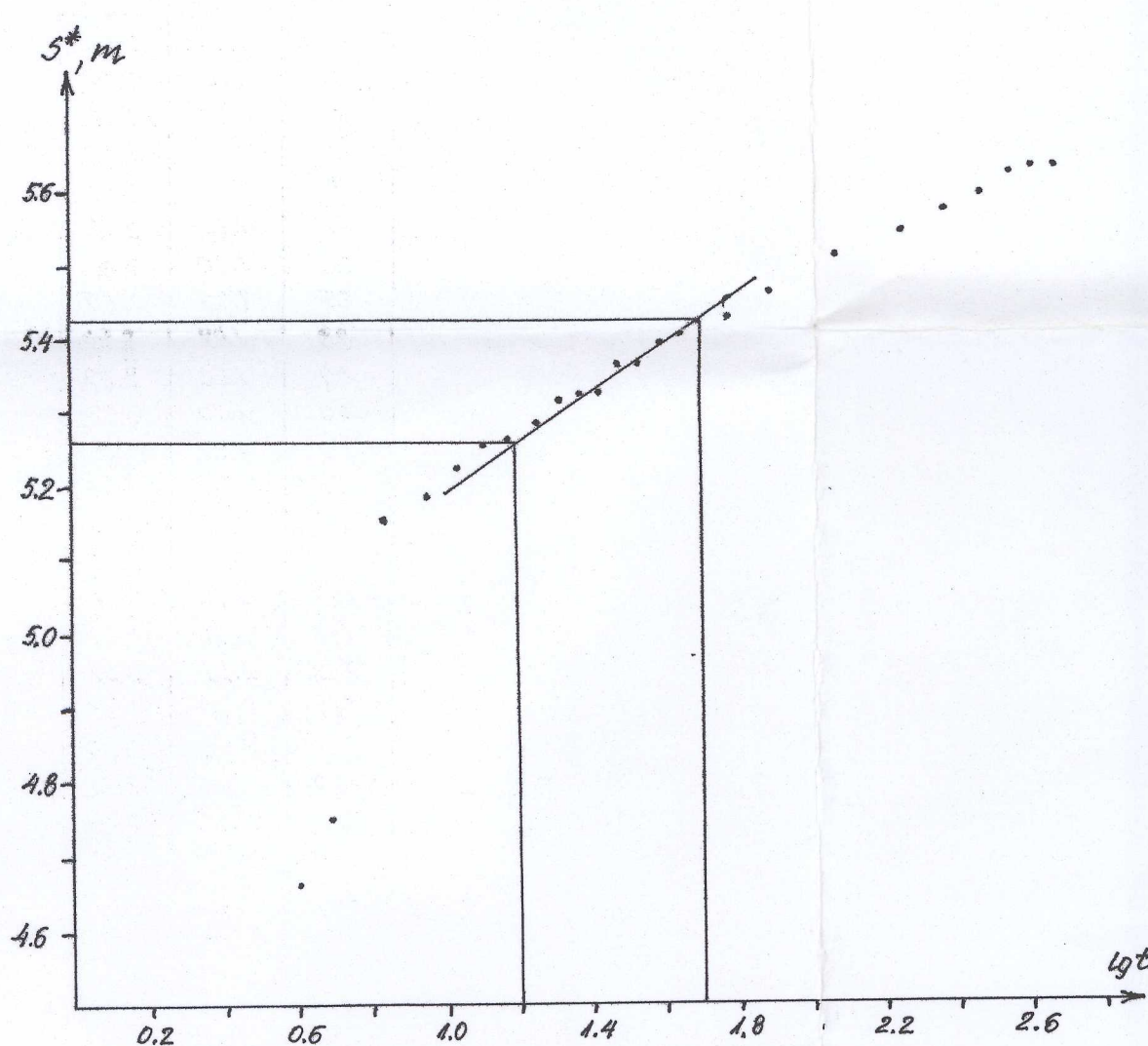
$$T = \frac{0.183 \cdot Q}{c} = 272$$

Puurauk U-9-2

t, min	lg t	S, m
1	-	-
2	0.30	4.55
3	0.48	4.63
4	0.60	4.62
5	0.69	4.72
6	0.78	4.74
7	0.84	4.74
9	0.95	4.78
11	1.04	4.81
13	1.11	4.86
15	1.18	4.86
18	1.26	4.91
21	1.32	4.90
24	1.38	4.91
27	1.43	4.93
30	1.48	4.95
35	1.54	4.99
40	1.60	4.97
50	1.70	5.06
60	1.78	5.08
90	1.90	5.22
120	2.08	5.25
180	2.26	5.22
240	2.38	5.26
300	2.48	5.27
360	2.56	5.33
420	2.62	5.36
480	2.68	5.38
540	2.72	5.40
600	2.78	5.39



t, min	lg t	S*, m
2	0.3	4.04
3	0.48	4.23
4	0.60	4.66
5	0.69	4.75
7	0.84	5.15
9	0.95	5.18
11	1.04	5.22
13	1.11	5.25
15	1.18	5.26
18	1.26	5.28
21	1.32	5.31
24	1.38	5.32
27	1.43	5.32
30	1.48	5.36
35	1.54	5.36
40	1.60	5.39
45	1.65	5.40
50	1.70	5.42
60	1.78	5.43
90	1.90	5.46
120	2.08	5.51
180	2.26	5.54
240	2.38	5.57
300	2.48	5.59
360	2.56	5.62
420	2.62	5.63
480	2.68	5.63



$$c = \frac{S_2 - S_1}{\lg t_2 - \lg t_1} = 0.48$$

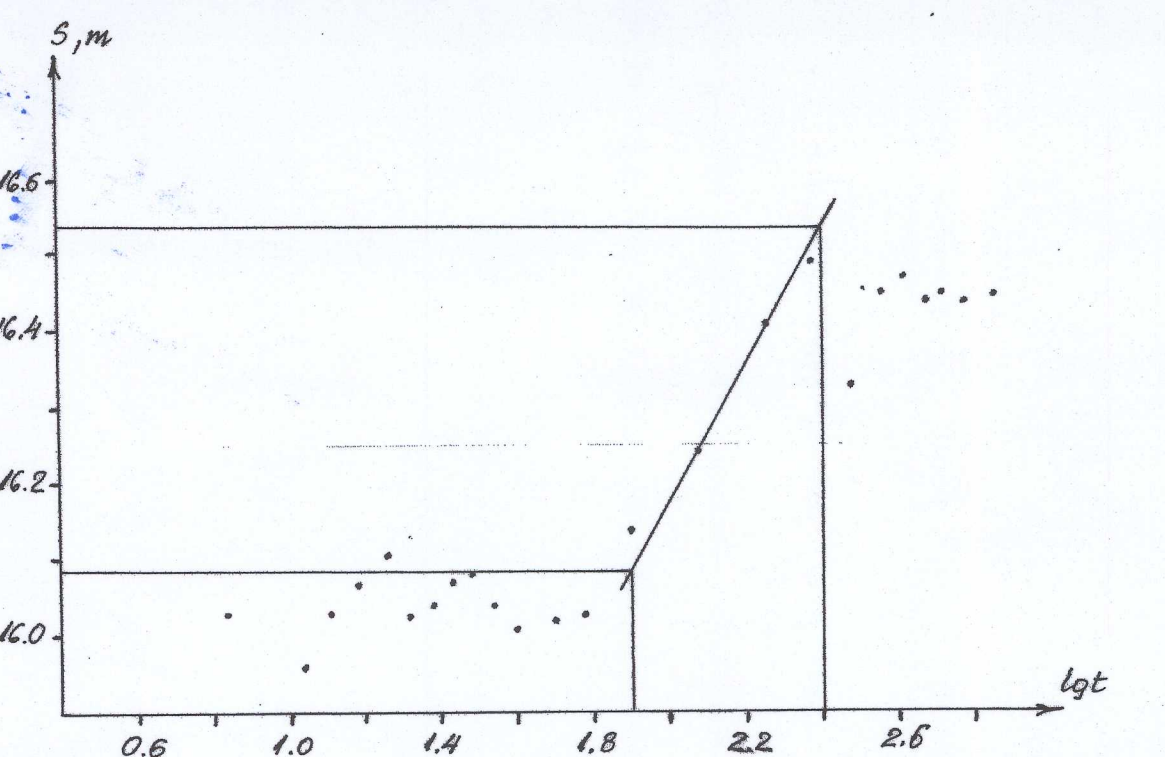
$$T = \frac{0.183 \cdot Q}{c} = 264$$

$$c = \frac{S_2^* - S_1^*}{\lg t_2 - \lg t_1} = 0.34$$

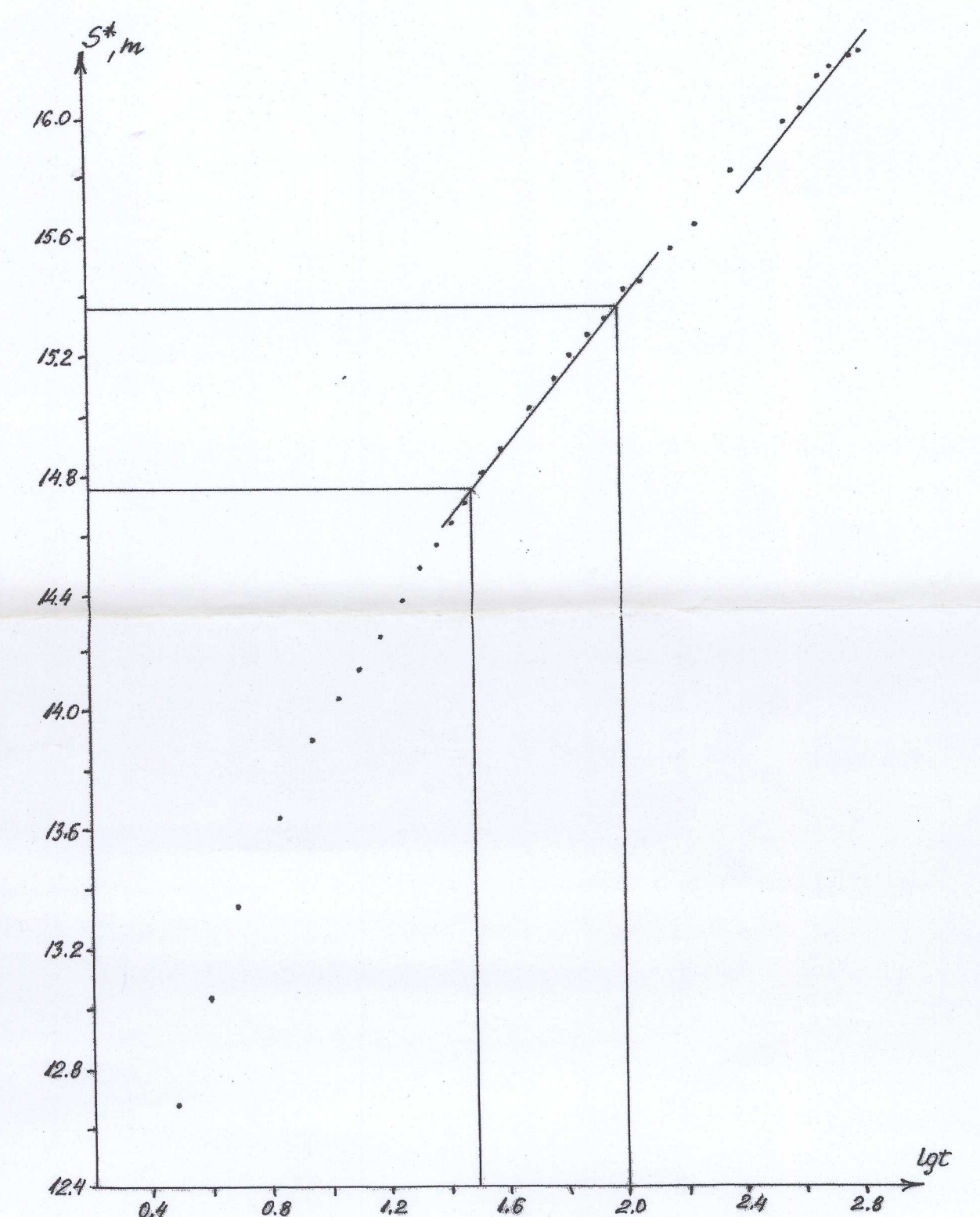
$$T = \frac{0.183 \cdot Q}{c} = 372$$

Puurauk U-9-3

t, min	lg t	S, m
7	0.84	14.03
11	1.04	15.96
13	1.11	16.03
15	1.18	16.07
18	1.26	16.11
21	1.32	16.03
24	1.38	16.04
27	1.43	16.07
30	1.48	16.08
35	1.54	16.04
40	1.60	16.01
50	1.70	16.02
60	1.78	16.03
90	1.90	16.14
120	2.08	16.24
180	2.26	16.11
240	2.38	16.19
300	2.48	16.33
360	2.56	16.45
420	2.62	16.47
480	2.68	16.44
540	2.72	16.45
600	2.78	16.44
720	2.86	16.45



t, min	lg t	S*, m
2	0.3	11.46
3	0.48	12.68
4	0.60	13.04
5	0.69	13.34
7	0.84	13.64
9	0.95	13.85
11	1.04	14.04
13	1.11	14.14
15	1.18	14.25
18	1.26	14.38
21	1.32	14.49
24	1.38	14.57
27	1.43	14.64
30	1.48	14.71
35	1.54	14.81
40	1.60	14.89
50	1.70	15.03
60	1.78	15.12
70	1.84	15.20
80	1.90	15.27
90	1.95	15.32
105	2.02	15.42
120	2.08	15.45
150	2.18	15.56
180	2.26	15.64
240	2.38	15.82
300	2.48	15.83
360	2.56	15.98
420	2.62	16.03
480	2.68	16.13
540	2.72	16.16
600	2.78	16.20
660	2.82	16.22



$$c = \frac{S_2 - S_1}{\lg t_2 - \lg t_1} = 0.92$$

$$T = \frac{0.183 \cdot Q}{c} = 44$$

$$c = \frac{S_2^* - S_1^*}{\lg t_2 - \lg t_1} = 1.20$$

$$T = \frac{0.183 \cdot Q}{c} = 34$$